

Pop up album medium



Cutting guide

By: Yvanca van Welt



Scrap and Coffee

creative memory keeping

www.scrapandcoffee.com

Supply list

Medium- or heavyweight chipboard 2 sheets 12"x 12"
Cardstock 12" x 12" 1-2 packs of 25 sheets
Wet glue like art glitter glue
Double sided tape like score tape 3/8" and/or 1/4"
Magnets
Acetate .007
Patterned paper of choice (I used Ocean blue by Graphic 45)

Optional:

Shaker elements like sequins or microbeads
Lightweight chipboard
Fabric for cover
Fabric glue like fabric tac

Basic tools

- Scoreboard
 - Bone folder
 - Paper trimmer
 - Ruler
 - Scissors
-
- Cutting surface like a self adhesive cutting mat.
 - Craft knife / utility knife
 - Pencil / Erase

Legend / Explanation used colors:



Pop up album medium

Cover

Cut 2 pcs of chipboard 8.75" x 9.25"

Cut 1 pcs of chipboard 8.75" x 2.75"

I covered my album with fabric using:

2 pcs approx. 11" x 11"

1 pcs approx. 11" x 6"

I put a layer of loft batting in between the chipboard and fabric.

Frame on front cover (for 6" x 4" card/photo)

Lightweight chipboard: 5" x 7" (Cut 5/8" frame)

Cardstock for wrapping: 6" x 8"

Acetate: 4-5/8" x 6-5/8"

Cardstock on the back: 5" x 7"

Binding (for 3 pages with 0.75" gusset)

Cut 1 pcs Cardstock 12" x 8.25"

Align the 12" side along the top of your scoreboard and score at:

2.25" | 3.25" | 4.25" | 5" | 6" | 7" | 7.75" | 8.75" | 9.75"

Base pages: (You will need 3 pcs)

A: 8.25" x 8.25"

B: 9.25" x 8.25"

Score on the 9.25" side at: 0.50" and 8.75"

Page 1

A: 8.25" x 11.75"

Cut and score according to **diagram 1**

B: 8.25" x 10.25"

Score on the 10.25" side at: 5-1/8"

C: 5" x 6"

Score on the 6" side at: 4.50" and 4-5/8"

Frame:

Lightweight chipboard: 5" x 4" (Cut 5/8" frame)

Cardstock for wrapping: 6" x 5"

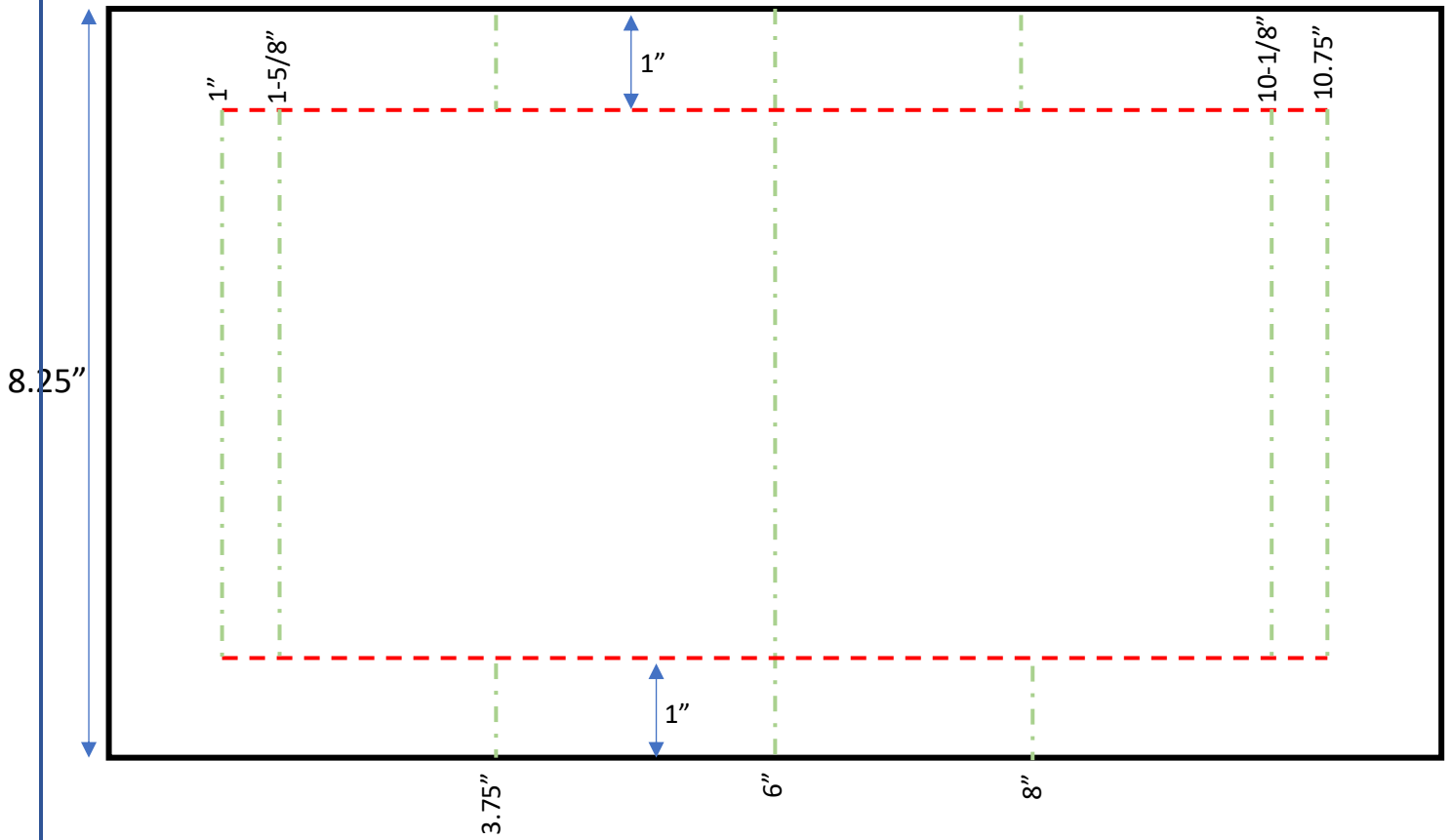
Acetate: 4.5/8" x 3.5/8"

Hinges:

1 piece 1" x 8.25"

2 pieces 1" x 5-1/8"

Diagram 1



Page 2

A: 5" x 10.25"

Score on the 10.25" side at: 1" and 9.25"

B: **2 pcs:** 5" x 4-5/8"

Score on the 4-5/8" side at: 0.50"

C: 4" x 11"

Score on the 11" side at: 2.50", 2-5/8", 7-5/8" and 7.75"

Frame:

Lightweight chipboard: 5" x 4" (Cut 5/8" frame)

Cardstock for wrapping: 6" x 5"

Acetate: 4.5/8" x 3.5/8"

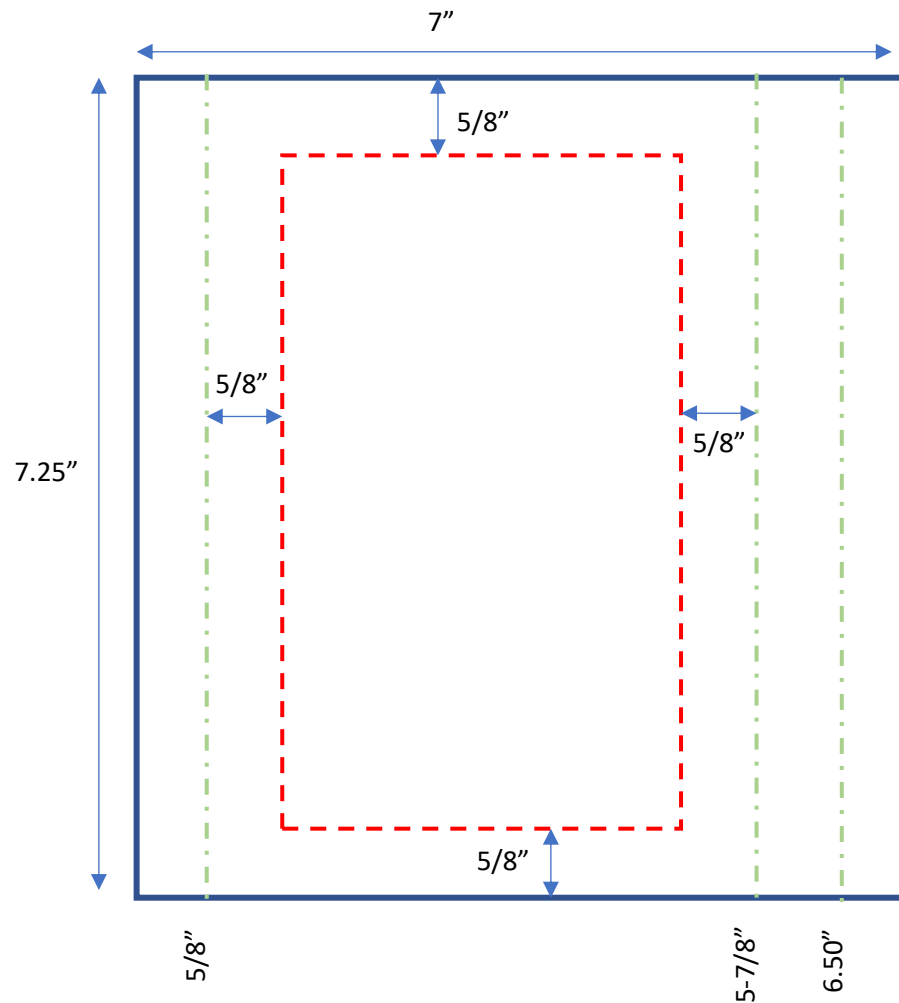
D: 8.25" x 7"

Score on the 7" side at: 0.50"

E: 7.25" x 7"

Score on the 7" side at: 5/8", 5-7/8" and 6.50" (**Diagram 2**)

Diagram 2:



Page 3

A: 12" x 6.25"

Score on the 12" side at: 4.25", 4.75", 5.25", 5.75", 6.25" and 6.75"

B: 7-5/8" x 6.25"

Score on the 7-5/8" side at: 3.50" and 3-5/8" (and mark the 0.50")

C: 2" x 9.25"

Score on the 9.25" side at: 1-3/8", 1.50", 7.75" and 7-7/8"

D: 5 pcs: 6.25" x 4.25"

Frame:

Lightweight chipboard: 5" x 4" (Cut 5/8" frame)

Cardstock for wrapping: 6" x 5"

Acetate: 4.5/8" x 3.5/8"

Cardstock for back: 5" x 4"

Page 4

A: 12" x 4.25"

B: 4.25" x 1.75"

Combine piece A & B to make a piece 4.25" x 13.25"

Score this piece according to **diagram 3**

C: 4.25" x 10.25"

Score on the 10.25" side at: 3.25", 6.50" and 9.75"

D: 4.25" x 3.25"

Combine pieces C & D to make a piece 4.25" x 13"

Score and cut this piece according to **diagram 4**

E: 5.25" x 10.25"

Score on the 10.25" side at: 1" and 9.25"

F: 5.25" x 8.50"

Score on the 8.50" side at: 0.50"

G: 5.25" x 4.75"

Score on the 4.75" side at: 0.50" and 5/8"

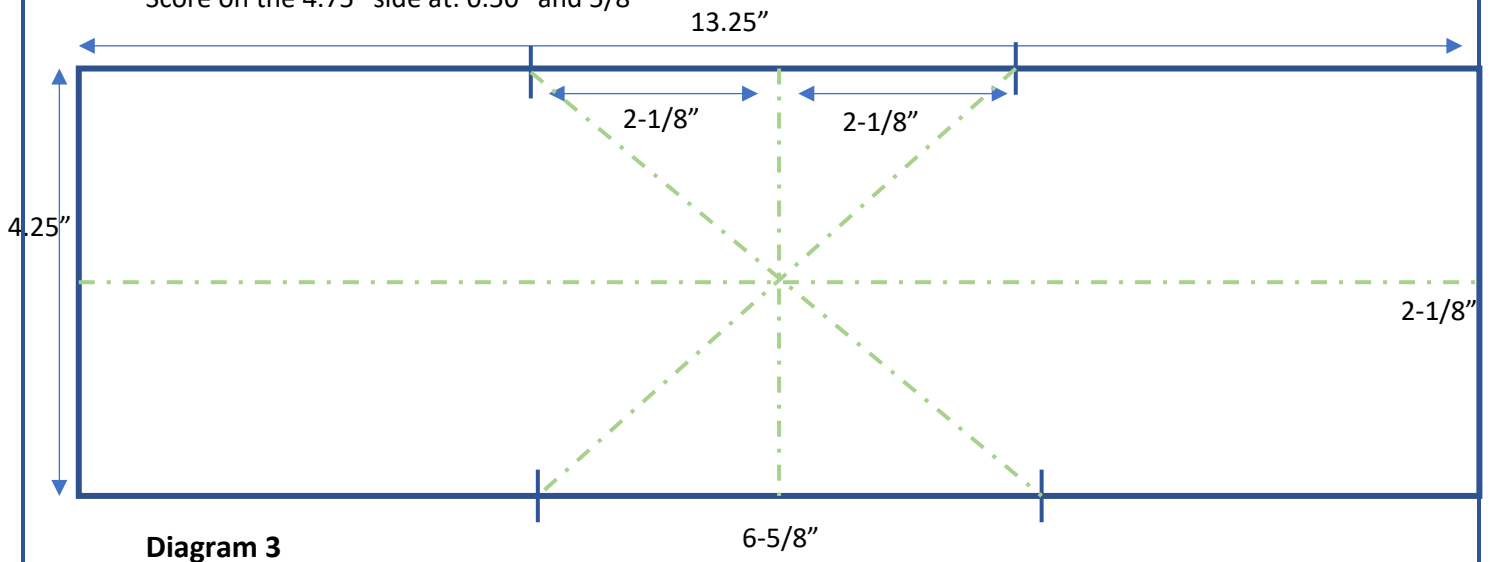


Diagram 3

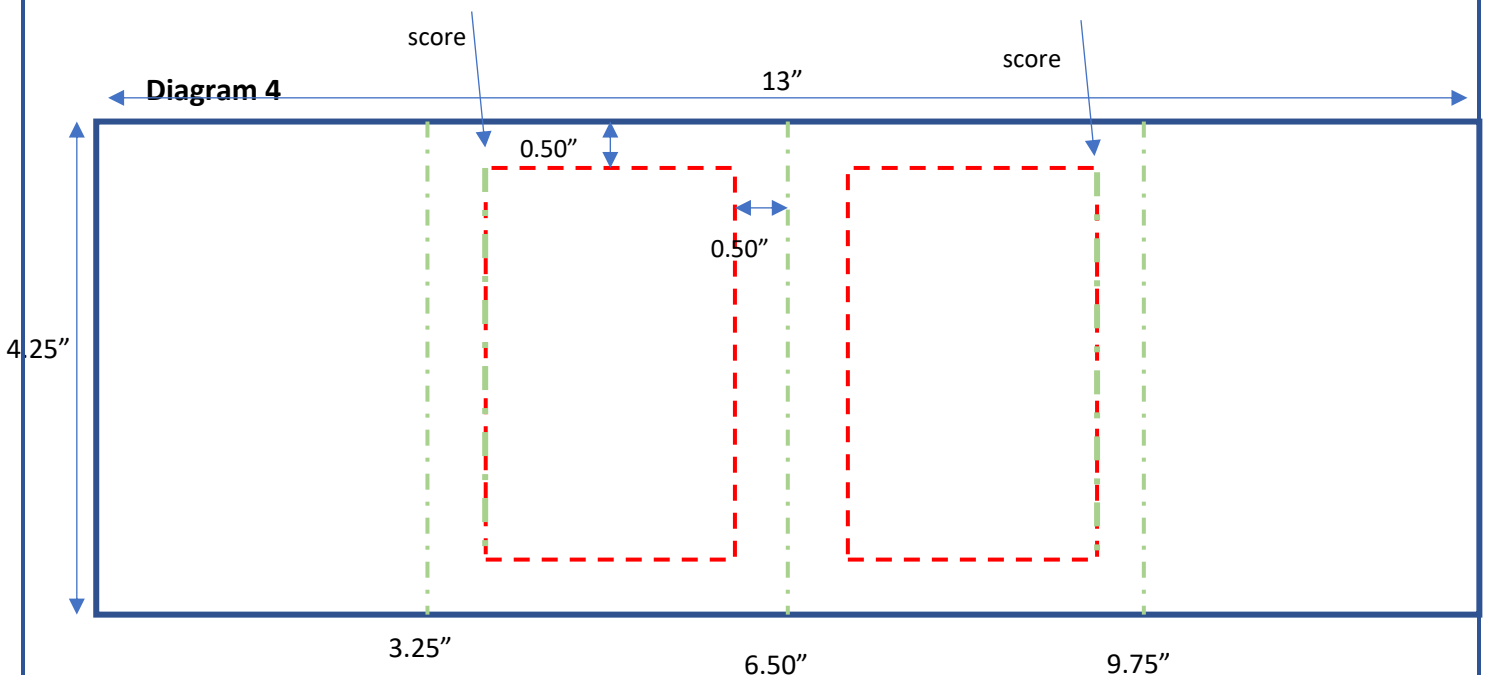


Diagram 4

Page 5

Inside of the page:

A: 8.25" x 8.75"

Score on the 8.75" side at 0.50"

B: 2 pcs: 5" x 3.50"

Score and cut this piece according to **diagram 5 (A & B)**

C: 2 pcs: 4-1/8" x 8.25"

Score on the 8.25" side at 4-1/8"

Front page

D: 2 pcs: 11-3/8" x 5.75"

Score on 11-3/8" side at: 1-5/8" 3.25" 6.50" and 8-1/8" Cut according to **diagram 6**

E: 2 pcs: 5.75" x 3.75"

Score on 3.75" side at 0.50"

Diagram 5 A

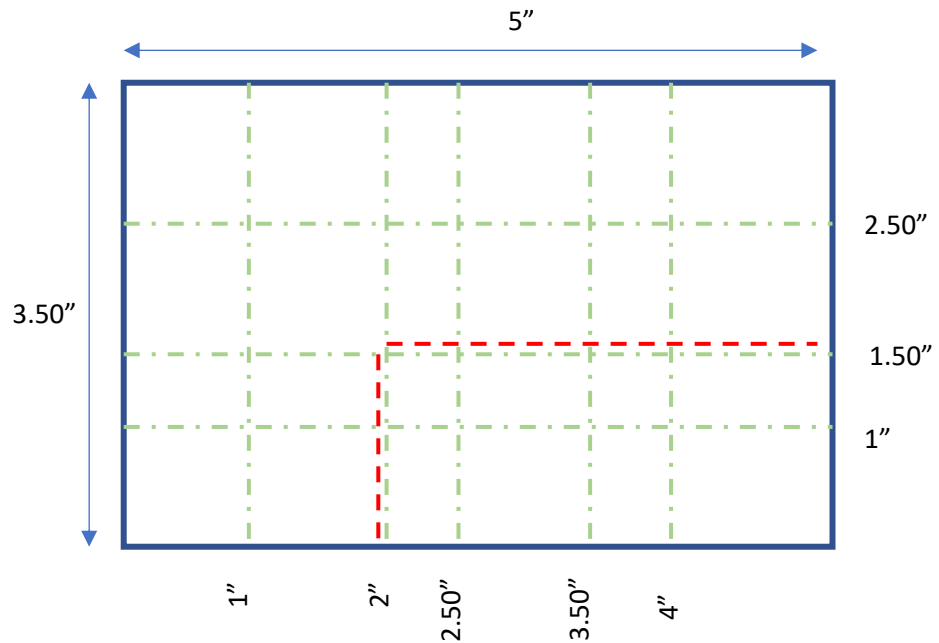


Diagram 5 B

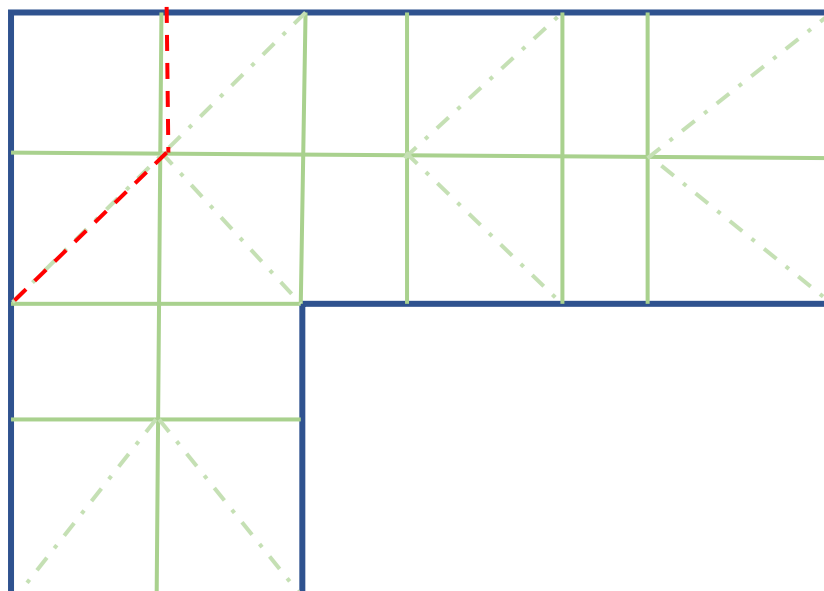
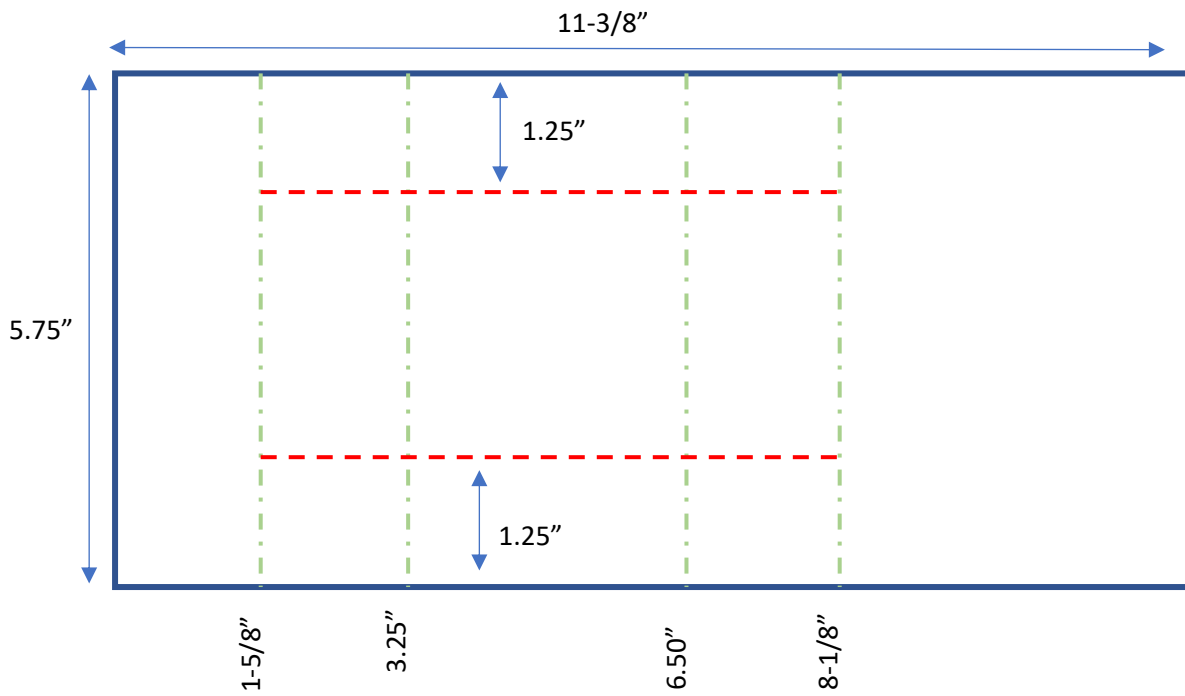


Diagram 6



Page 6

A: 8.25" x 8.75"

B: 8.25" x 4-5/8"

Score on the 4-5/8" side at: 0.50"

Score on the 8.75" side at: 0.50"

C: 8" x 8.25"

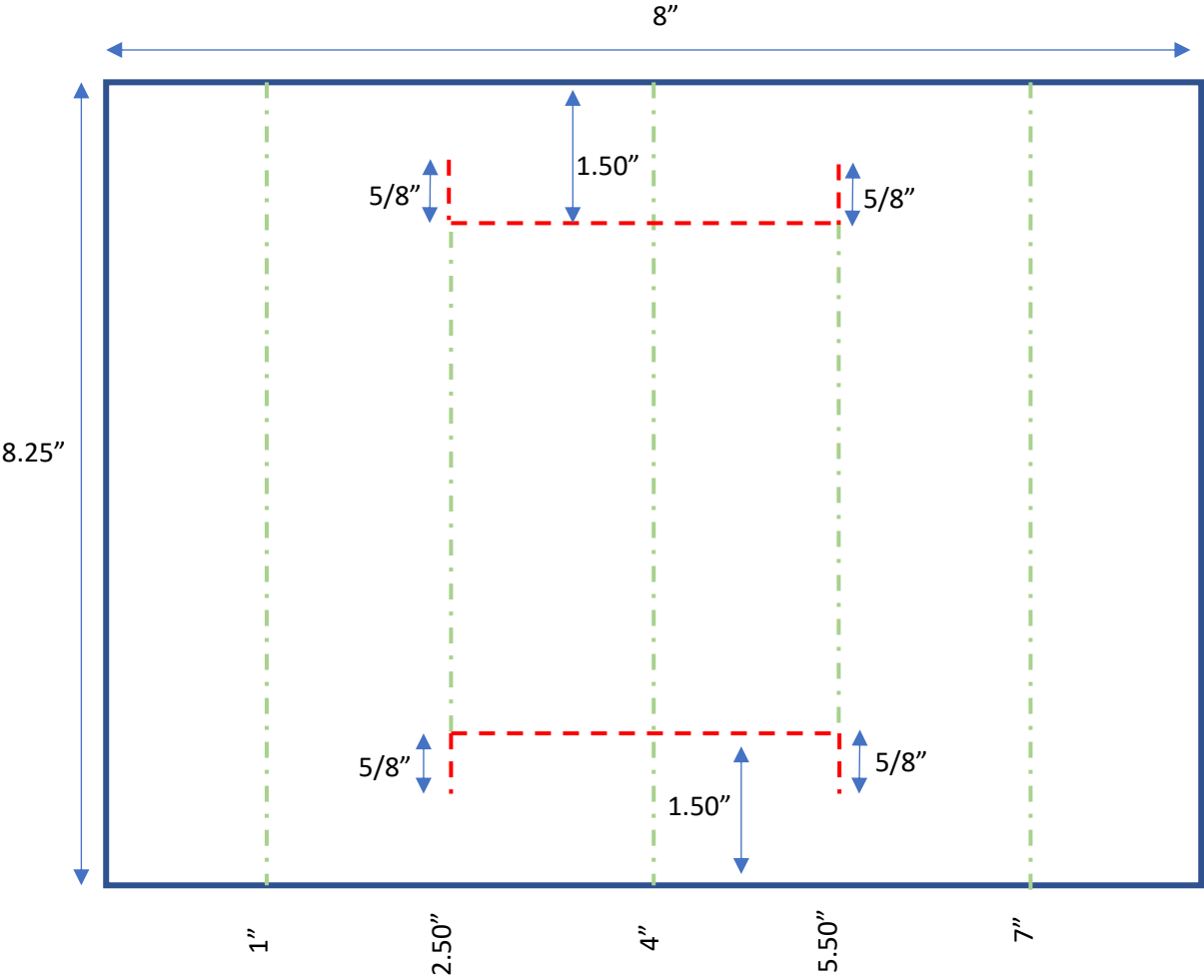
Score on the 8" side at: 1" 4" and 7"

Follow **diagram 7** for further scoring and cutting.

D: 11.50" x 6.25"

Score on the 11.50" side at 5.75"

Diagram 7



Front inside Cover:

- A: 10" x 6.25"
- Score on the 10" side at: 0.50" and 9.50"
- Score on the 6.25" side at: 0.50"
- B: 9" x 5.75"
- Follow **Diagram 8** for making 2 windows in this piece.
- B: 2 pcs 5.25" x 3.75"
- Score on the 5.25" side at: 0.50" and 4.75"
- Score on the 3.75" side at: 0.50"
- Cut according to **Diagram 9**

Diagram 8

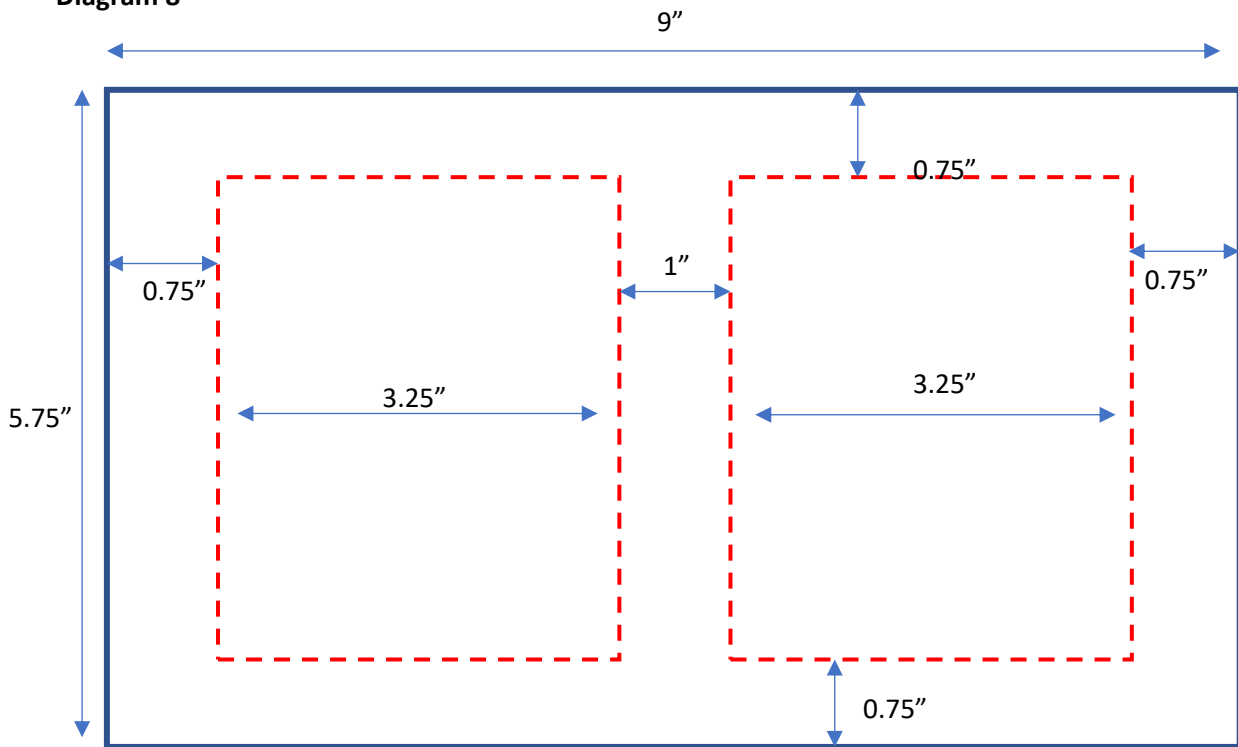
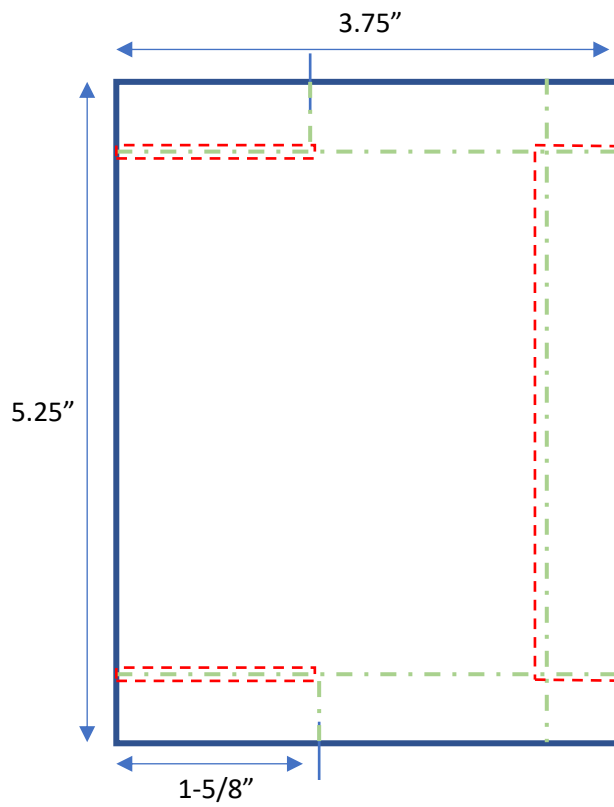


Diagram 9



Back inside cover

A: 11" x 6.25"

Score on the 11" side at: 0.50" 5.75" and 6.75"

B: 12" x 8.50"

Score on the 12" side at: 6.50"

C: 9.50" x 3.25"

Score on the 9.50" side at: 0.50" and 9"

Score on the 3.25" side at: 0.50"